



**SOUTH MADISON COUNTY  
FIRE PROTECTION DISTRICT  
GLUCKSTADT FIRE DEPARTMENT  
114 YANDELL RD \* CANTON, MS 39046  
Phone (601) 856-1770  
Fax 601-691-4450**

**August 15, 2018**

**Dear Shelton Vance,**

**I would like to request that this letter from the Mississippi State Rating Bureau concerning the recent survey and grading of the South Madison County Fire Protection District be added to the Madison County Board of Supervisors meeting agenda for August 20, 2018.**

**Sincerely,**

**Henry Davis  
Fire Chief**



# MISSISSIPPI STATE RATING BUREAU

P.O. BOX 5231, JACKSON, MISSISSIPPI 39296-5231  
6455 WIRTZ ROAD, FLOWOOD, MISSISSIPPI 39232-7801  
TELEPHONE (601) 981- 2915 • FAX (601) 981-2924

August 2, 2018

Fire Chief Henry Davis  
Gluckstadt Fire Department  
114 Yandell Road  
Canton, Mississippi 39046

Dear Chief Davis:

PUBLIC FIRE PROTECTION FACILITIES  
SOUTH MADISON COUNTY FIRE  
PROTECTION DISTRICT  
MADISON COUNTY, MISSISSIPPI

---

Reference is made to the recent survey and grading of the South Madison County Fire Protection District's fire prevention and fire protection facilities. The purpose of this survey was to gather information needed to determine a fire insurance classification which may be used to develop fire insurance rates. This survey was not conducted for property loss prevention or life safety purposes and no life safety or property loss prevention recommendations will be made. We are pleased to advise that the fire defenses of the South Madison County Fire Protection District have advanced, and a fire insurance classification of Sixth Class has been confirmed effective July 30, 2018.

As you may know, the public fire protection insurance classification number is used as only one of several elements in developing some individual property fire insurance rates. Individual property fire rates are also dependent upon specific construction, occupancy, private protection and exposure from adjacent buildings.

We are pleased to attach a bulletin that is being distributed which outlines the procedure to be followed in changing fire insurance rates on properties in the South Madison County Fire Protection District based on the new classification.

Fire Chief Henry Davis  
Gluckstadt Fire Department

- 2 -

August 2, 2018

Your interest in fire protection and prevention is commended, and we will be happy to be of assistance should you call upon us.

Sincerely,

A handwritten signature in black ink, appearing to read "Stephen Applewhite". The signature is written in a cursive style with a large initial 'S'.

Stephen Applewhite  
Field Rating Representative  
Public Protection

kp



# MISSISSIPPI STATE RATING BUREAU

P.O. BOX 5231, JACKSON, MISSISSIPPI 39296-5231  
6455 WIRTZ ROAD, FLOWOOD, MISSISSIPPI 39232-7801  
TELEPHONE (601) 981-2915 • FAX (601) 981-2924

August 2, 2018

TO ALL INTERESTED AGENTS:

CHANGE IN PUBLIC FIRE PROTECTION  
CLASSIFICATION  
SOUTH MADISON COUNTY FIRE  
PROTECTION DISTRICT  
MADISON COUNTY, MISSISSIPPI

---

We are pleased to advise that effective July 30, 2018, the classification of the South Madison County Fire Protection District, Madison County, Mississippi, changed from SEVENTH CLASS to SIXTH CLASS.

This public protection classification applies to eligible properties (properties having a needed fire flow of 3,500 gallons per minute or less) located within the legal boundaries of this District, within five (5) road miles of the responding fire department serving the District and within 1,000 feet of a standard public fire hydrant. Properties not within 1,000 feet of a standard public hydrant will receive the split classification (6X).

The fire department for this District DOES PROVIDE PRIMARY RESPONSE to residential fires outside its legal boundaries.

To assist you in determining the properties included in the South Madison County Fire Protection District, we are enclosing a map showing the boundaries of the area.

When issuing daily reports and endorsements, you must show location of the property covered to be in the South Madison County Fire Protection District, Madison County, Mississippi.

Any insurance contracts covering dwellings located in this District may be endorsed from July 30, 2018, on a pro rata basis to take advantage of the current fire premiums indicated in our Mississippi Dwelling Manual.

(OVER)

TO ALL INTERESTED AGENTS:

- 2 -

August 2, 2018

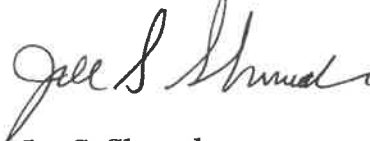
Comprehensive Dwelling Policies and Homeowners policies also may be endorsed on a pro rata basis to take advantage of applicable rates or premiums.

It will be necessary that we survey or resurvey and publish or republish loss costs for specifically rated mercantile and special class risks affected by this change in classification. If you have a specific mercantile or special risk that you feel is affected by this classification change, please advise our Rating Department so we will be able to schedule a survey by our district representative.

A computer printout will be mailed to those who submit a specific request. The effective date of the loss costs will be made retroactive to July 30, 2018.

Following publication of information for class rated properties and rates for specifically rated properties, policies which cover these properties, and which have inception on or after July 30, 2018, may be endorsed from inception to the new rates, while policies having inception prior to July 30, 2018, may be endorsed from July 30, 2018, to expiration on a pro rata basis. In calculating the net rates and premiums for these endorsements, the inception date of the policy or the last endorsed anniversary date determines the rate adjustment, if any, applicable.

Yours very truly,

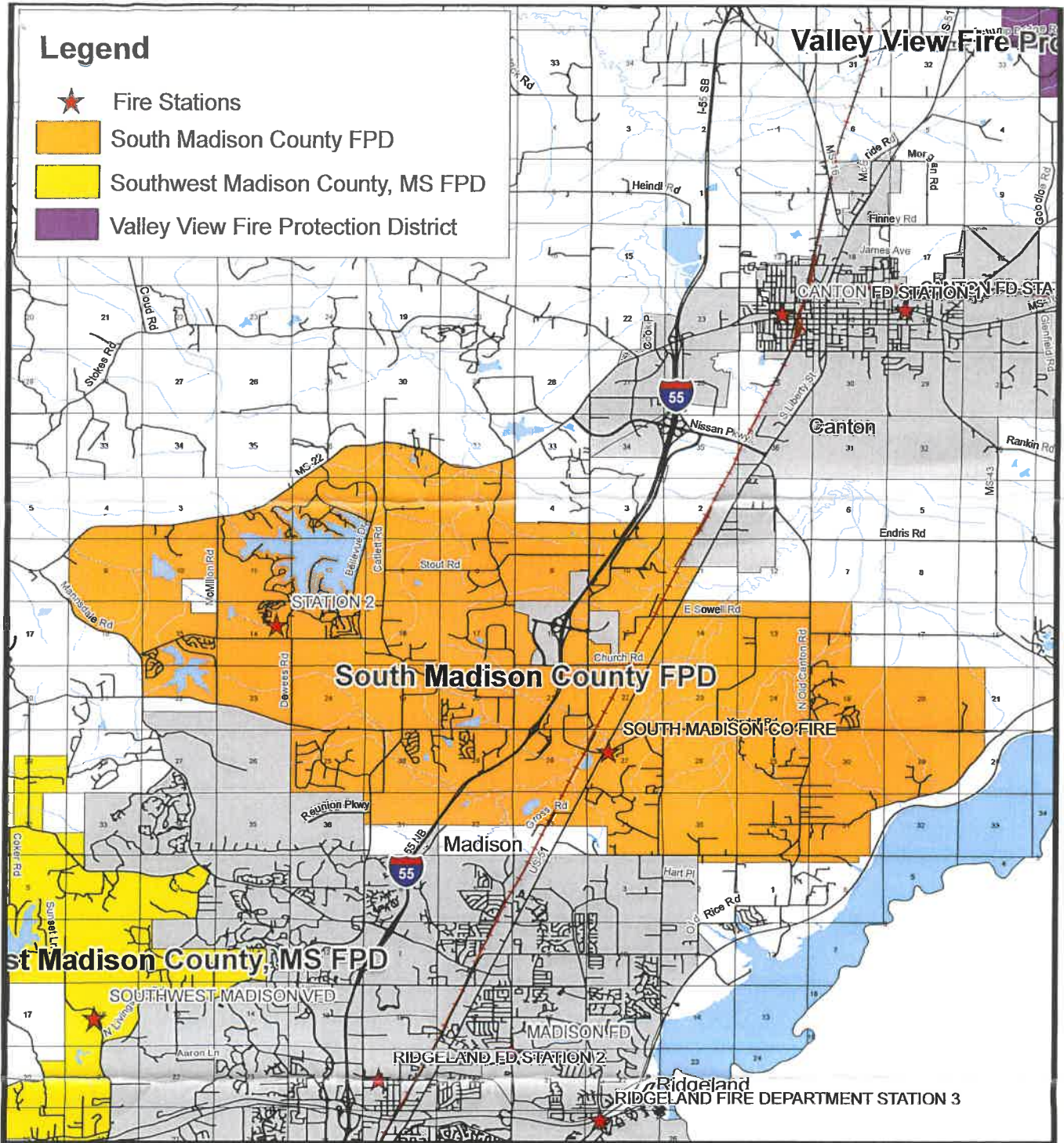


Joe S. Shumaker  
Manager

kp

# Legend

- ★ Fire Stations
- South Madison County FPD
- Southwest Madison County, MS FPD
- Valley View Fire Protection District



# SOUTH MADISON COUNTY FIRE PROTECTION DISTRICT MADISON COUNTY

MISSISSIPPI STATE RATING BUREAU  
PO BOX 5231  
JACKSON, MISSISSIPPI 39296

PUBLISHED JULY 2018

